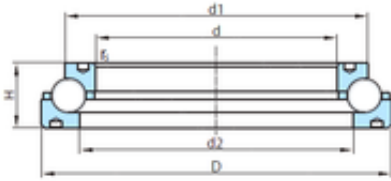


PSL PSL 212-306 angular contact ball bearings



Bearing No. PSL 212-306

Size	514.35x704.85x114.3 mm
Bore Diameter	514,35 mm
Outer Diameter	704,85 mm
Width	114,3 mm
d	514,35 mm
D	704,85 mm
H	114,3 mm
d1	571,5 mm
d2	514,35 mm
r	6,4 mm
Weight	109 Kg
Basic dynamic load rating (C)	763 kN

PSL 212-306 Bearing 2D drawings and 3D CAD models