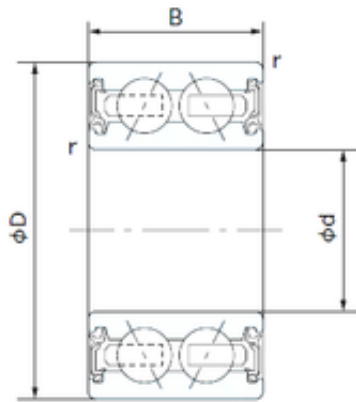


## 40 mm x 62 mm x 20.625 mm NACHI 40BGS8G-2DL angular contact ball bearings



Bearing No. 40BGS8G-2DL

Size	40x62x20.625 mm
Bore Diameter	40 mm
Outer Diameter	62 mm
Width	20.625 mm
d	40 mm
D	62 mm
B	20.625 mm
C	20.625 mm
r min.	0.65 mm
Basic dynamic load rating (C)	18,1 kN

40BGS8G-2DL Bearing 2D drawings and 3D CAD models